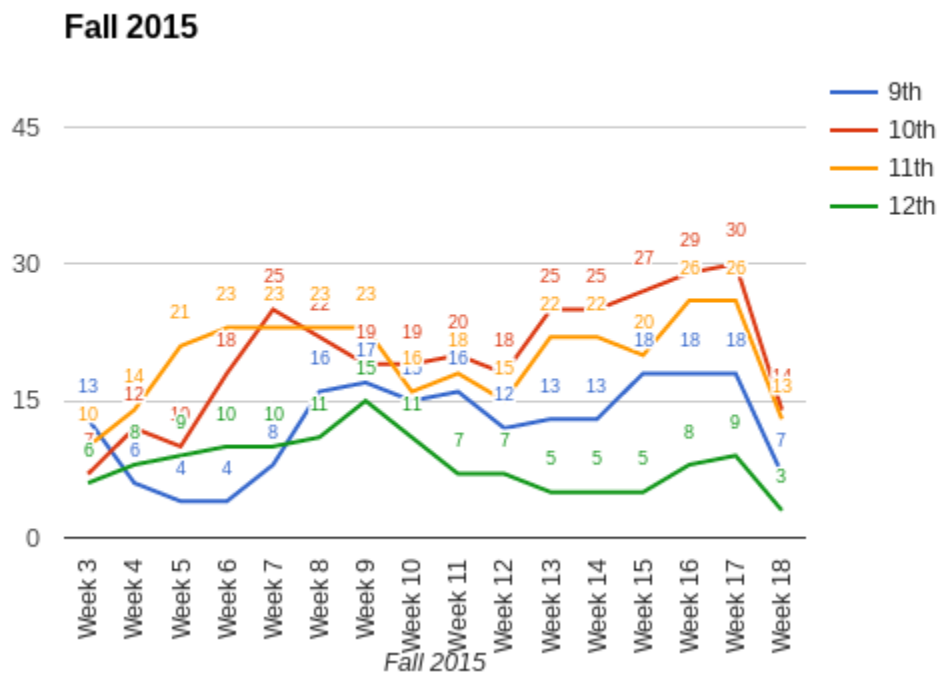
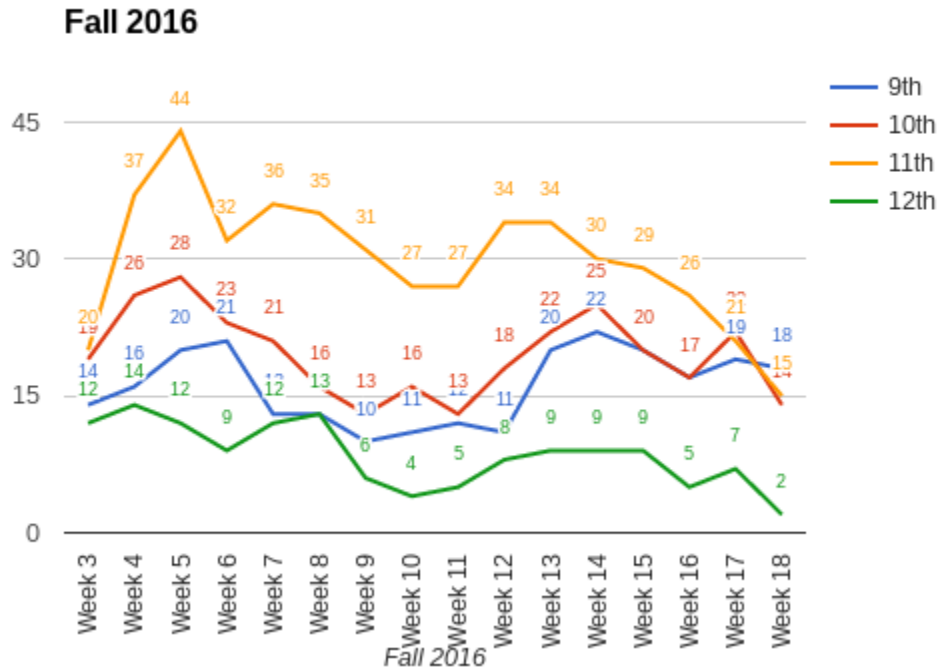


**MTSS Fall Semester: 2016**

**Line Graph Comparisons:**



**Percentage Comparisons: 2015 and 2016**

Underlined=Same or Improved from Previous Year  
 All percentages are rounded.

Fall 2016	9th	10th	11th	12th
<b>0 F's</b>	108 (92%)	<u>122 (95%)</u>	<u>119 (93%)</u>	<u>115 (98%)</u>
<b>1 F</b>	6 (5%)	<u>5 (4%)</u>	<u>8 (6%)</u>	<u>2 (2%)</u>
<b>2 F's</b>	0 (0%)	0 (0%)	1 (1%)	<u>0 (0%)</u>
<b>3+ F's</b>	3 (3%)	2 (2%)	<u>1 (1%)</u>	<u>0 (0%)</u>

Fall 2015	9th	10th	11th	12th
<b>0 F's</b>	126 (95%)	123 (95%)	113 (91%)	103 (97%)
<b>1 F</b>	5 (4%)	5 (4%)	10 (8%)	3 (3%)
<b>2 F's</b>	1 (1%)	3 (2%)	0 (0%)	0 (0%)
<b>3+ F's</b>	0 (0%)	1 (1%)	1 (1%)	0 (0%)

\*Several students failed multiple classes because they were moving schools. This accounts for 9 F's for the Freshmen.

**Class Comparison:**

Underline=Same or Improved from Last Year

All Percentages are rounded

<b><u>Class of 2019</u></b>	<b>2015</b>	<b>2016</b>
<b>0 F's</b>	126 (95%)	<u>122 (95%)</u>
<b>1 F</b>	5 (4%)	<u>5 (4%)</u>
<b>2 F's</b>	1 (1%)	<u>0 (0%)</u>
<b>3+ F's</b>	0 (0%)	2 (2%)

<b><u>Class of 2018</u></b>	<b>2015</b>	<b>2016</b>
<b>0 F's</b>	123 (95%)	119 (93%)
<b>1 F</b>	5 (4%)	<u>8 (6%)</u>
<b>2 F's</b>	3 (2%)	<u>1 (1%)</u>
<b>3+ F's</b>	1 (1%)	<u>1 (1%)</u>

<b><u>Class of 2017</u></b>	<b>2015</b>	<b>2016</b>
<b>0 F's</b>	113 (91%)	<u>115 (98%)</u>
<b>1 F</b>	10 (8%)	<u>2 (2%)</u>
<b>2 F's</b>	0 (0%)	<u>0 (0%)</u>
<b>3+ F's</b>	1 (1%)	<u>0 (0%)</u>